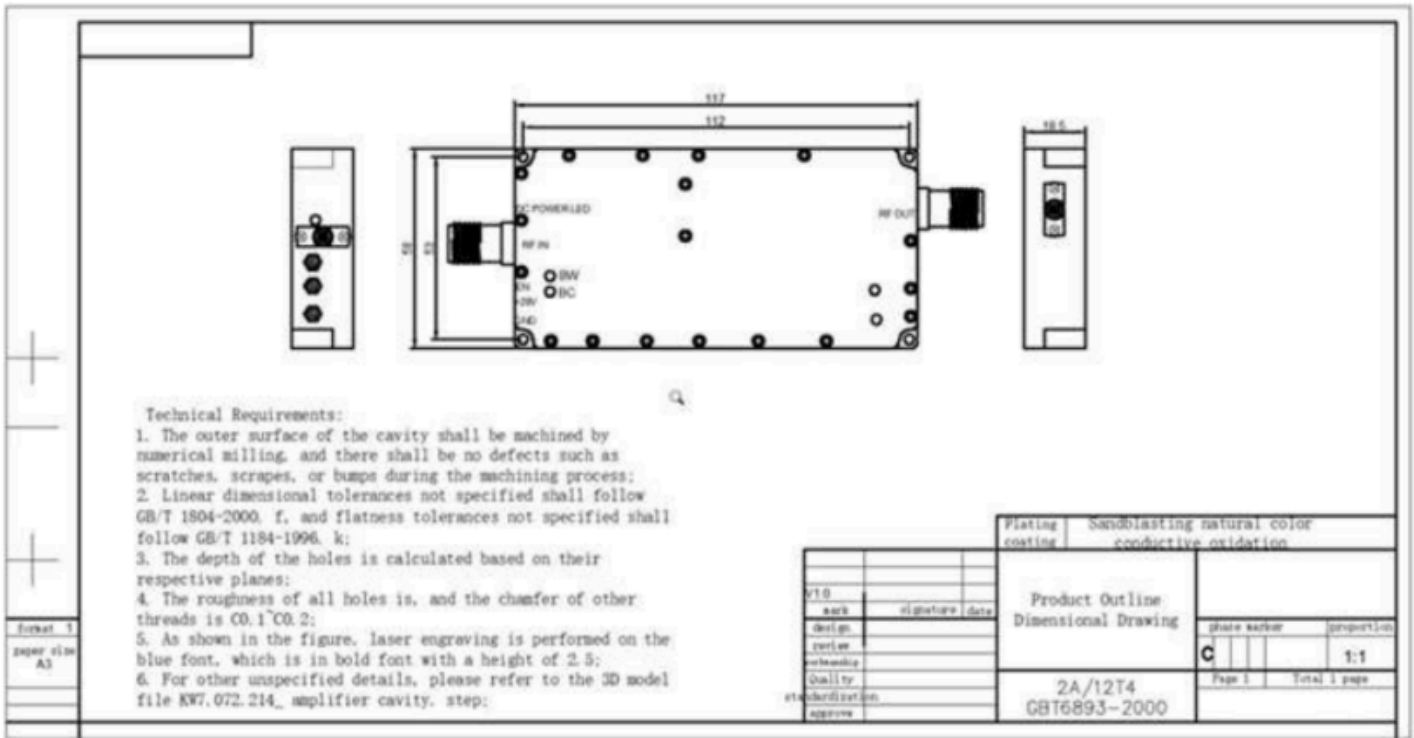


RF DATA

ITEM		SPECIFICATIONS	REMARKS
Frequency Range		5500-5700M	Bandwidth Range \pm 10MHz
Working Voltage		28V	24-32V
INput Power (Max)		\leq 10dBm	
Output Power (Max)		\geq 44.8 dBm	30W
Gain (Max)		40 \pm 1dB	
Ripple in Band		\leq 3 dB	Peak
Enable Control		Customize	3-28V
EN switch frequency		10000 times	Switching time interval \geq 3S
Output VSWR		\leq 2	
High Low Temperatu re Test	Working Temperature	-20 \sim +65 $^{\circ}$ C	Working properly
	Gain Stability	\pm 1 dB	At -20 $^{\circ}$ C \sim +55 $^{\circ}$ C
	Power Stability	\pm 1 dB	At -20 $^{\circ}$ C \sim +55 $^{\circ}$ C
Working Current		\leq 3A @+28V dc;	CW output 30W
Power Supply Port		Positive and negative lines	24-28V; GND
RF Output Connector		SMA-Female	
Green LED Indicator Light		CD Power ON/OFF	It lights up when the power supply voltage is present and turns off when the power is switched off.
Working Life		10000 hours	The chamber temperature during operation shall not exceed 65 $^{\circ}$ C.
Dimension		117*58*18 mm	
Installation Dimension		112*53*18 mm	
Screw Size		4- \varnothing 3.20 mm	
Weight		230g	



The red box indicates the location of the low-level amplification tube, which is the main heating area with a heat generation of approximately 50-60W

The cavity uses copper blocks for heat conduction, evenly transferring heat to the aluminum cavity

Note that when the red LED lights up, check if there are any issues with the heat dissipation, if the screws securing the PA are tightened, and if the PA and heat sink are coated with heat dissipation silicone grease

Technical Solution:

